

## CHECK

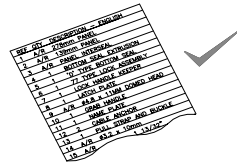
1

Ensure: Mounting angle installed to 'S'

\* All parts are present as listed.

automatically the opening edge of the post.

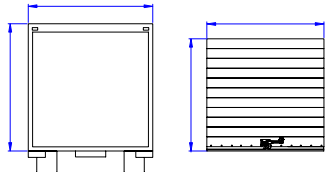
N.B. The door and related parts will fit together and into your unit in a straight forward, easy way. If the parts do not seem to fit correctly, DO NOT use force. Contact us straight away.



dimension as dered,

\* Door is to ordered size.

or-not

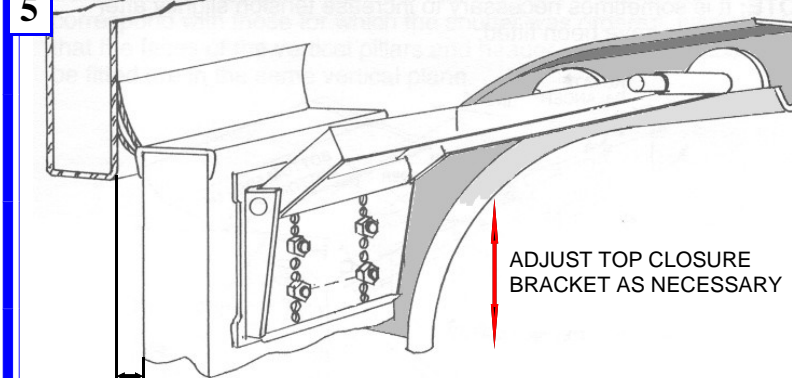


### HEALTH AND SAFETY AT WORK ACT 1974

Users are reminded of their obligation to ensure that all persons involved in handling, installing, disposing of this product are made aware of these notes and that sufficient information is passed to your customer to comply with the Act. In particular, note that under no circumstances should the vehicle in which the shutter is fitted be driven or be in motion at all when the shutter is in the open position.

## TOP CLOSURE

5



Insert rollers (28) into top closure arm (25or26) and then into tracks (1or2). Hinge top panel to vertical and push against header whilst fitting arm to base on top panel. Secure in place with 4 nuts (24). Repeat on other side.

When door is closed, top panel (11) should be vertical with 8mm clearance between panel and header. Adjust top closure arm (25&26) bracket if necessary.

ADJUST TOP CLOSURE BRACKET AS NECESSARY

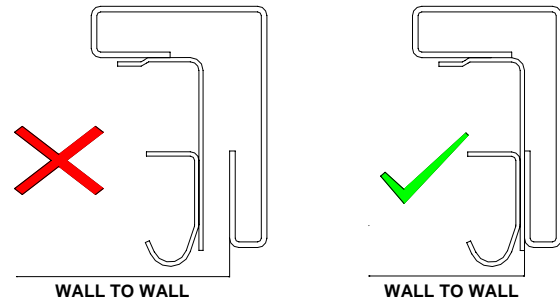
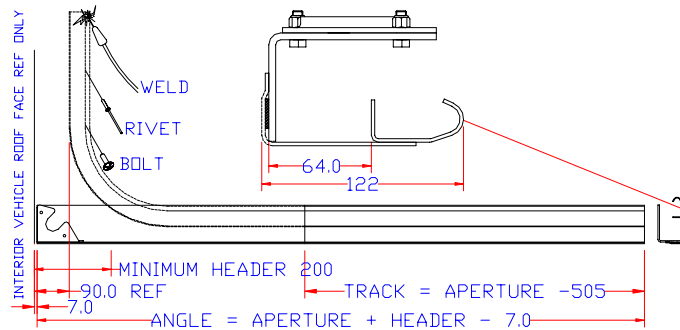
8mm CLEARANCE BETWEEN PANEL AND HEADER

## TRACKS

2

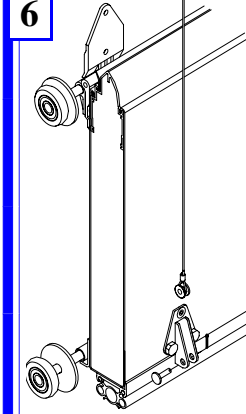
Attach vertical track (8) and 64mm galv strip (7) and angle (5) to side of body inside corner post. Line horizontal track (1&2) up with vertical track (8) and fix in place by welding, bolts or rivets (using low profile fixings.) Ensure horizontal track (1&2) is parallel across length.

Ensure: Mounting angle is installed to 'S' dimension as ordered, not automatically the opening edge of the post.



## TENSION BALANCER

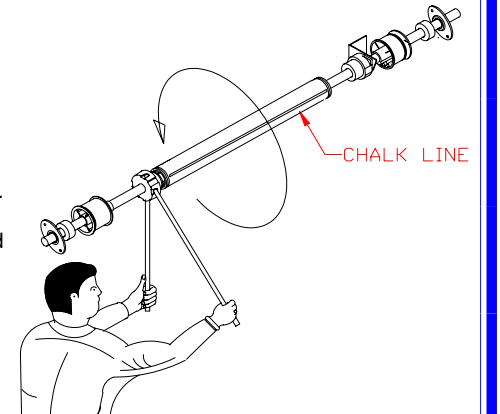
6



Position cable thimble (42) between cable anchor bracket (39) secure in place with cotter pins (40) & split pins (23). Feed cable between header and top of door and fit to balancer drums. Engage lock (29) in latch plate (52). Place mole grips on shaft to prevent rotation, mark chalk line along spring coil as indicated right.

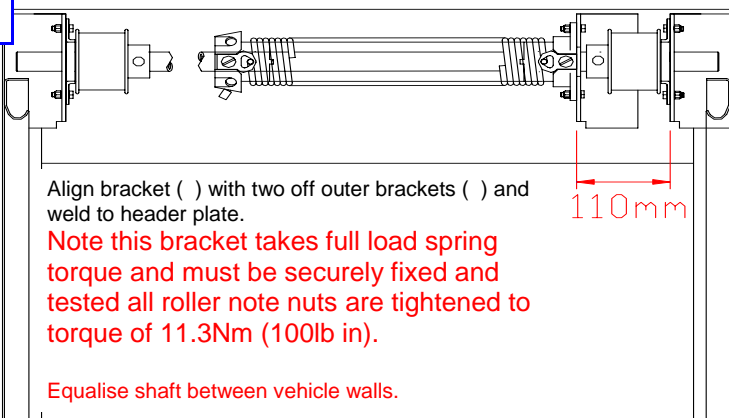
To determine the number of spring turns required divide the shutter height by 250 and add 2.5 turns i.e.  $2100 / 250 = 8.4 + 2.5 = 10.9$  turns.

Place tommy bar dia 13mm into spring winding plug & lift, Place second tommy bar dia 13mm into spring winding plug & lift, continue in this manner until the required turns have been applied this can be done by counting the chalk coils on the spring, Tighten bolts on the spring winding plug. Remove mole grips and test operation of door and adjust as necessary.

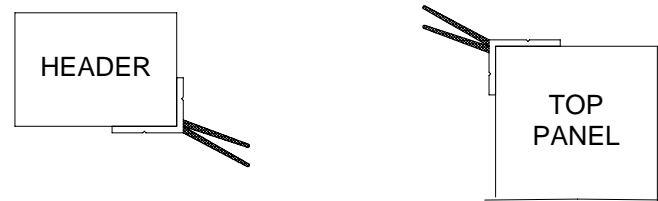


## BALANCER/TOP SEAL

3



Top seal may be fixed to underside of header or to top panel as shown below.

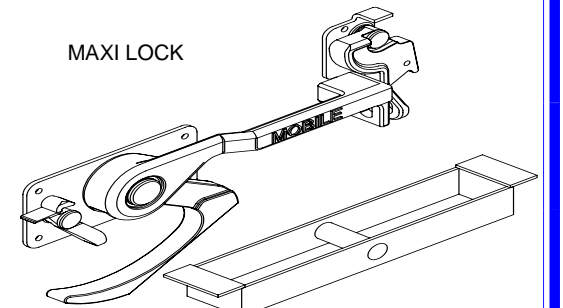
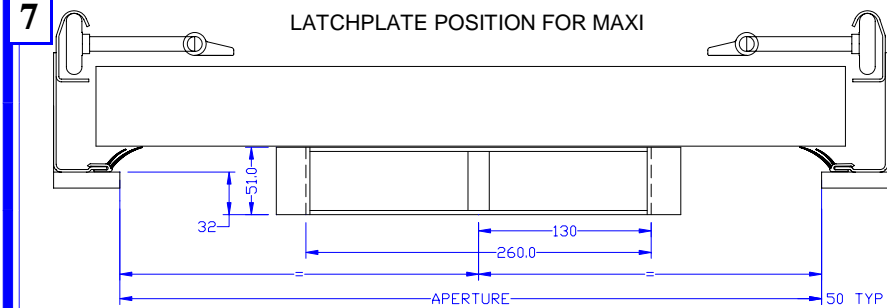


Align bracket ( ) with two off outer brackets ( ) and weld to header plate. Note this bracket takes full load spring torque and must be securely fixed and tested all roller note nuts are tightened to torque of 11.3Nm (100lb in).

Equalise shaft between vehicle walls.

## LATCH PLATE

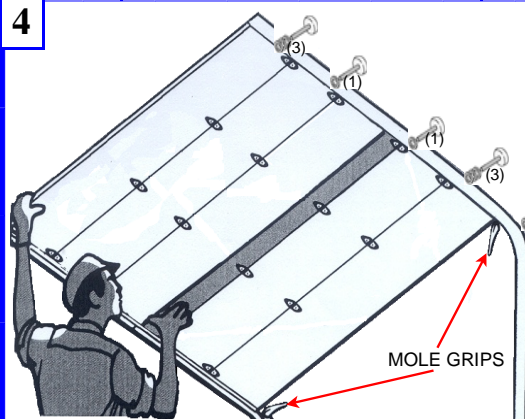
7



Align latchplate (52) as shown by appropriate diagram. Use latchplate as template to mark area to be cut out. When fitted, the upper face of the latchplate **MUST** be flush with and parallel to the surface the door closes against. The latchplate can be welded or bolted in place. As an additional check, reference can be made to the gauge marks on the front of the lock (29).

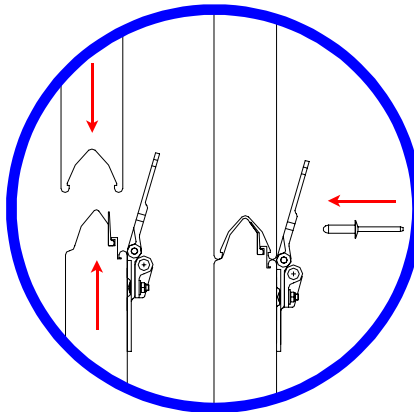
## CURTAIN

4



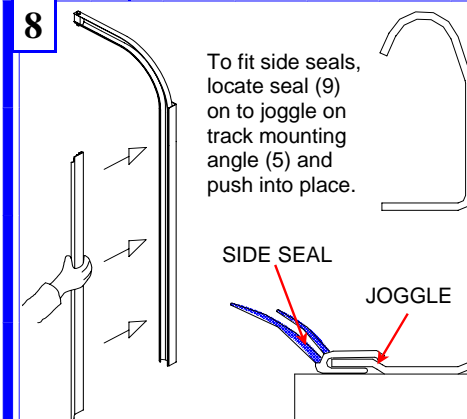
Fix mole grips to end of horizontal tracks to prevent door dropping. Place bottom Panel (14), with lock out wards, inside mounting angle (5). Locate steel rollers (35), with correct number of washers (34) (shown in brackets left) in track and attach to door with roller holders (33), nuts (28). Join remaining panels together, Push panels together align holes in hinges (31,32) and panel and fix using rivets (21) supplied (shown right), including the top panel (11), which should rest against adjoining panel while top closure arms (25,26) are fitted.

Ensure all roller clamp nuts are tightened to torque of 11.3Nm (100lb in).



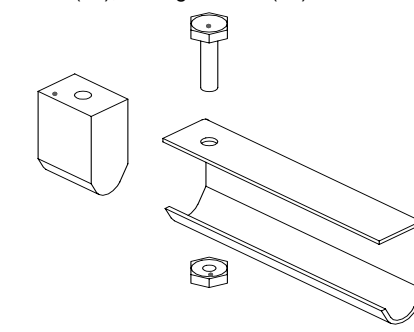
## TO FINISH

8



To fit side seals, locate seal (9) on to joggle on track mounting angle (5) and push into place.

Push rubber stop (6) into end of horizontal track (1,2) line up hole, insert bolt (46), and tighten nut (47).



Check door operation, re-adjusting balancer if necessary.

Check cables wind onto outside of balancer drum proper.

Check lock locates correctly with latch plate.



**STAND CLEAR OF  
OPENING WHEN DOOR IS  
MOVING**

**Leave the copy of  
maintenance/fitting  
instructions provided in the  
cab of the vehicle together  
with the remainder of the  
vehicle documentation or in  
the case of a semi-trailer  
together with any  
documentation relating to the  
trailer.**



**DO NOT USE PULL  
STRAP TO LEAVE  
VEHICLE**

**ALWAYS CLOSE AND LOCK THE DOOR BEFORE DRIVING VEHICLE**  
**DO NOT MOVE VEHICLE WITH DOOR IN THE UNDER ROOF POSITION.**

### **IMPORTANT MAINTENANCE INFORMATION**

#### **The following should be read and included in the Maintenance Schedule**

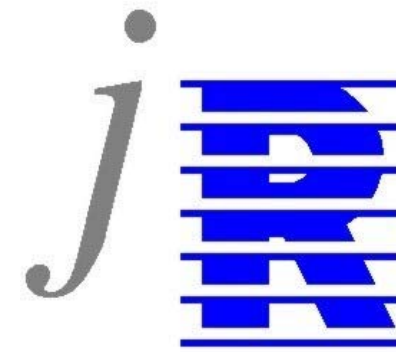
This door is constructed of high quality components intended to provide years of continued service. When in operation it is a large moving object, therefore, to ensure safe, reliable and continued operation, the following cautionary directions and periodic maintenance instructions must be observed.

1. While door is moving do not stand within opening or walk through doorway.
2. Operate door only when correctly adjusted and free from obstructions.
3. High-pressure cleaners or solvents can damage the door.
4. If door becomes difficult to operate or completely inoperative, it must be repaired immediately by an approved agent. Particular care should be given to the counter balance and cables. Repair and adjustment can be **hazardous** and should only be performed by an **approved agent**
5. **Daily:** - A general visual inspection of the shutter should be carried out with specific attention to the cable along the full length.
6. Replace any frayed or otherwise damaged cables.
7. Ensure regular checks and maintenance on items shown below (**Every 6-8 weeks**)
  - All nuts, bolts, screws and rivets to be checked for tightness.
  - Check all rollers operate smoothly, replace worn or damaged rollers.
  - Replace frayed or worn Pull Straps. **DO NOT** attach anything to the Pull Strap.
  - Where the lock mechanism is fitted or controlled by a **keyed cylinder** lubricate the cylinder **ONLY** with manufacturers recommended lubricant.
  - Other parts of the lock mechanism can be lubricated with light oil.
  - Tracks must be clear of grease and dirt.
  - Check roller shutter operation, lubricate roller shafts, bearings, hinges, tracks and spring with light oil (**not grease**) the use of aerosol sprays is not recommended as this may wash away the lubricant packed in the roller bearings.
  - Check door panels (inside and out) for gouges or paint chips, and repaint as needed.
  - If you repaint, check and if necessary re-adjust tension on lifting mechanism to restore ease of operation.

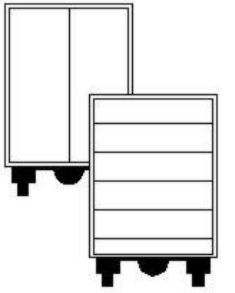
Use only genuine JR Mobile spare parts; the use of any other manufactured parts or not following the above will invalidate the warranty. In the unlikely event of an operational or warranty concern please contact

**Customer Services 029 20546135**  
**Mobile 07974 390511**

JR Mobile has a network of Agents for you're nearest Agent please contact  
J R Industries Ltd  
Tel +44 (0) 2920 549966  
Or visit [www.jrindustries.co.uk](http://www.jrindustries.co.uk)



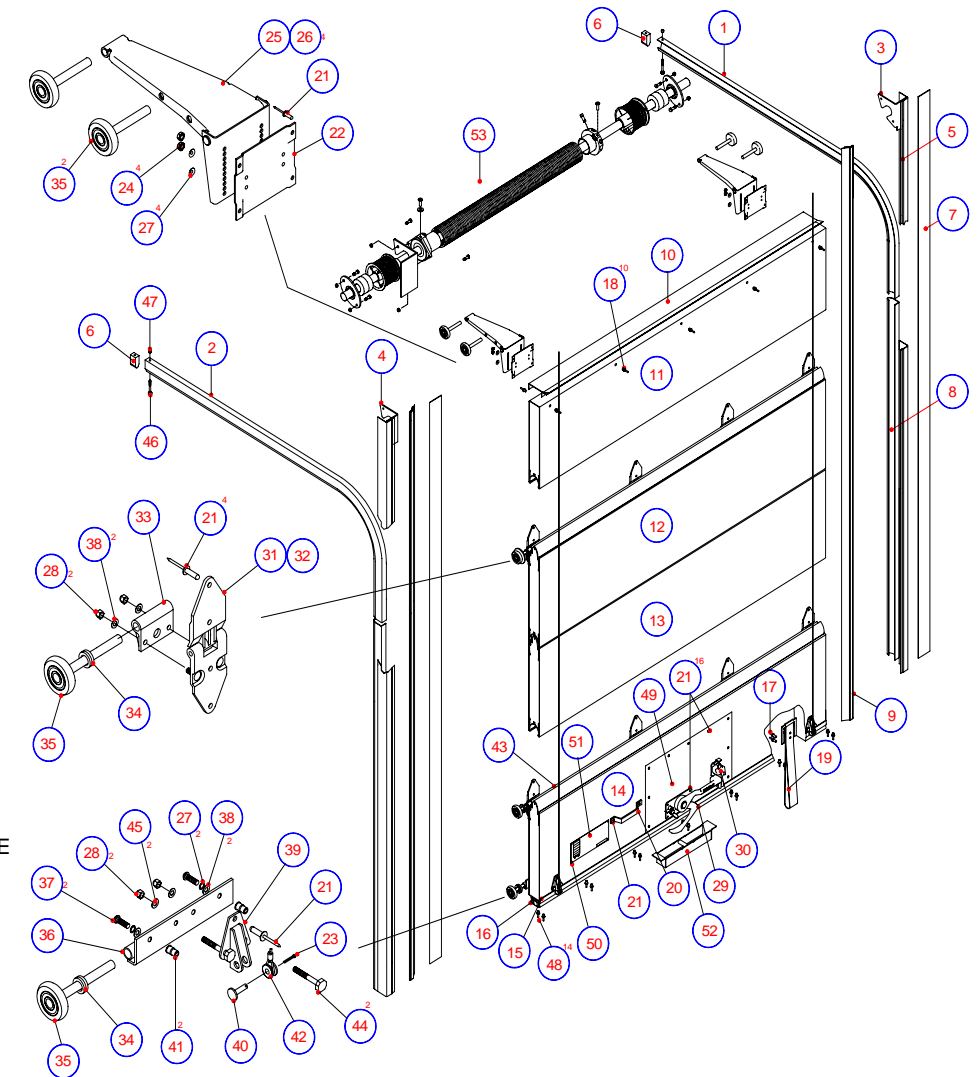
# Mobile



## Mobile K32 FITTING INSTRUCTIONS

### **PARTS LIST**

1. 2" O/S HORIZONTAL TRACK
2. 2" N/S HORIZONTAL TRACK
3. O/S SPRING BALANCER BRACKET
4. N/S SPRING BALANCER BRACKET
5. VERTICAL ANGLE
6. TRACK BUMPER STOP
7. 64mm GALVANISED STRIP
8. 2" VERTICAL TRACK
9. SIDE SEAL (JOGGLE ANGLE TYPE)
0. TOP SEAL
1. TOP PANEL
2. INTER PANEL 295mm
3. INTER PANEL 400mm
4. BOTTOM PANEL 383mm
5. BOTTOM PANEL RETAINER
16. BOTTOM SEAL
17. HEMLOCK RIVET 21mm
18. D850 RIVET
19. PULL STRAP
20. BZP LIFT HANDLE
21. HEMLOCK RIVET 15mm
22. TOP CLOSURE PLATE
23. COTTER PIN
24. M6 PLAIN NUTS/STEEL
25. TOP CLOSURE ARM O/S
26. TOP CLOSURE ARM N/S
27. M6 SHAKE PROOF WASHER S/S
28. M6 NYLOC NUT S/S
29. MAXI LOCK
30. MAXI LOCK KEEPER
31. END HINGE ZYTEL
32. CENTRE HINGE ZYTEL
33. HINGE ROLLER HINGE ZYTEL
34. SPACER WASHER
35. 2" ROLLER S/S SHAFT + NYLON TYRE
36. BOTTOM ROLLER HOLDER
37. 20mm BUTTON HEAD SOCKET SCREW
38. M6 PLAIN WASHER S/S
39. CABLE ANCHOR BRACKET
40. CABLE ANCHOR PIN
41. M6 FLANGED NUTSERT
42. CABLE (VARIOUS)
43. INTERMEDIATE SEAL
44. M6 x 80 HEX HEAD BOLT S/S
45. M6 SPRING WASHER
46. M6 x 65HEX HEAD BOLT
47. KEP NUT
48. AVIBULB RIVET 4.8mm x 16mm
49. KICK PLATE
50. 1/8" x 10mm RIVET
51. NAME PLATE
52. LATCH PLATE
53. REFER TO SPRING ILLUSTRATION



**J.R INDUSTRIES LTD.**  
**CAXTON PLACE, PENTWYN**  
**CARDIFF**  
**CF23 8XN**

**TEL: (029) 2054 9966**  
**FAX: (029) 2054 9046**  
**WWW.jrindustries.co.uk**