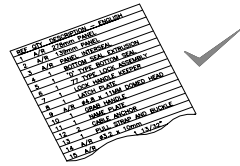


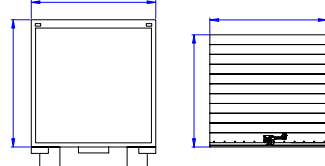
CHECK

1

* All parts are present as listed.



* Door is to ordered size.



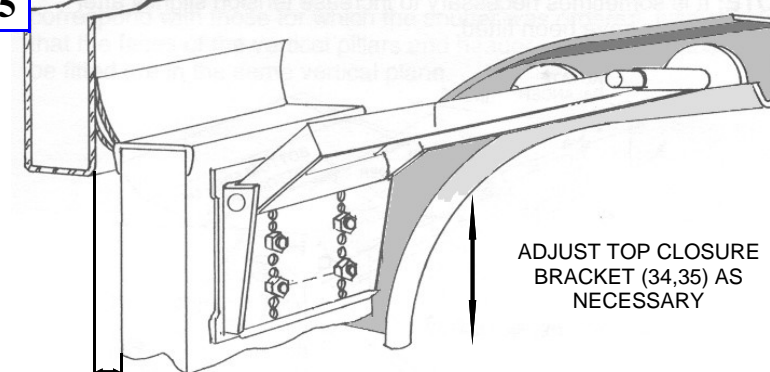
N.B. The door and related parts will fit together and into your unit in a straight forward, easy way. If the parts do not seem to fit correctly, DO NOT USE FORCE. Contact us straight away.

HEALTH AND SAFETY AT WORK ACT 1974

Users are reminded of their obligation to ensure that all persons involved in handling, installing, disposing of this product are made aware of these notes and that sufficient information is passed to your customer to comply with the Act. In particular, note that under no circumstances should the vehicle in which the shutter is fitted be driven or be in motion at all when the shutter is in the open position.

TOP CLOSURE

5



Insert rollers (25) into top closure arm (32 or 33) and then into tracks (4 or 5). Hinge top panel to vertical and push against header whilst fitting arm to base on top panel. Secure in place with 4 nuts (60). Repeat on other side.

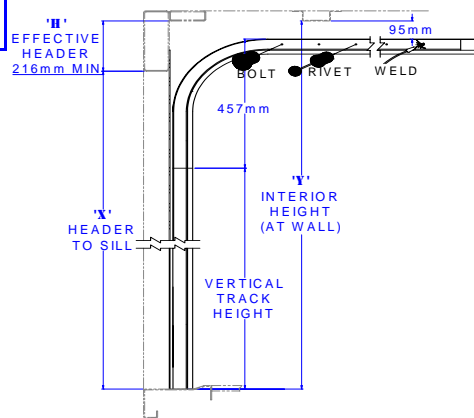
ADJUST TOP CLOSURE BRACKET (34,35) AS NECESSARY

When door is closed, top panel (1) should be vertical with 8mm clearance between panel and header. Adjust top closure arm (32 & 33) bracket if necessary.

8mm CLEARANCE BETWEEN PANEL AND HEADER

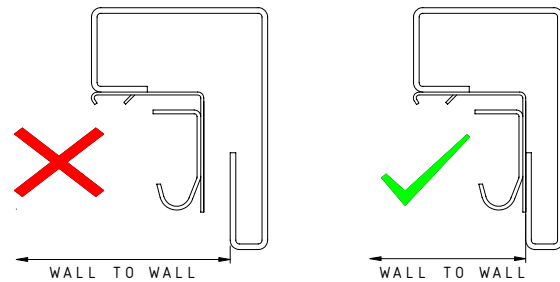
TRACKS

2



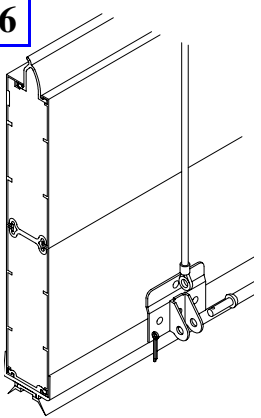
Attach vertical track (6) and mounting angle (14) to side of body inside corner post. Line horizontal track (4 & 5) up with vertical track (6) and fix in place by welding, bolts or rivets (using low profile fixings.) Ensure horizontal track (4 & 5) is parallel across length.

Ensure: Mounting angle installed to 'S' dimension as ordered, not automatically the opening edge of the post.

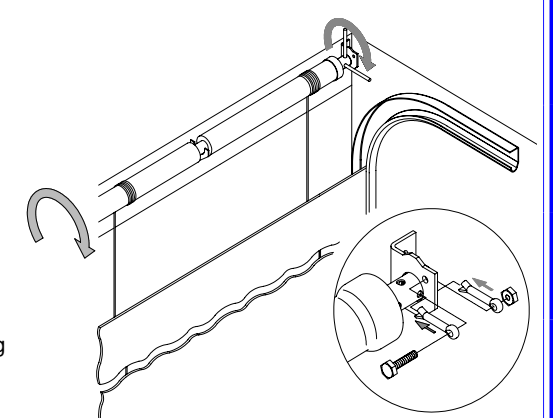


TENSION BALANCER

6

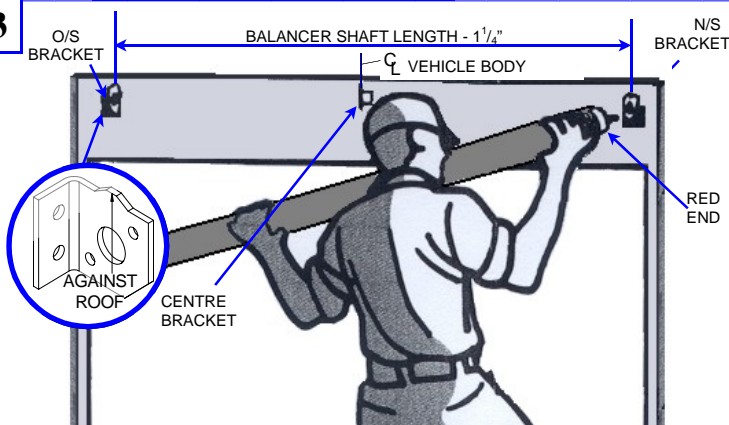


The curtain should be restrained in the horizontal tracks (4,5) approximately 400mm using mole grips between the bottom edge of the curtain and header. Remove nut & bolt (63,64) from split pins (37) in balancer bracket (53) so balancer (38) is free to rotate. Fit cable thimble (19) to cable anchor brackets (10) by removing split pins (9) & cotter pins (11) from cable anchor bracket (10). Position cable thimble (19) between cable anchor bracket (10) secure in place with cotter pins (11) & split pins (9). Insert nipple of cables (19) into key hole slots in balancer (38). Rotate balancer (38) downwards by hand until cables (19) are taut. Check cable thimbles (19) are free to pivot. Apply tension by rotating bars through right hand holes in shaft. Three to six full turns of the shaft will be necessary depending upon the weight of the curtain. Hold tension using bar, align eyes of split pins (37) with hole in mounting bracket (53) and replace nut & bolt (63,64). Remove mole grips and test operation of door and adjust as necessary.



BALANCER

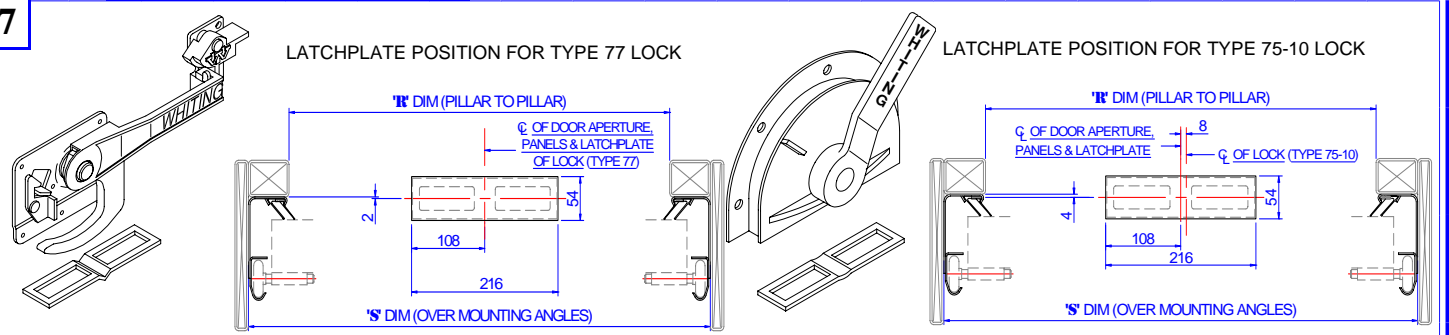
3



Find centre line of body and mark end bracket positions (see diagram.) Weld or bolt brackets (52 & 53) as close to roof as possible. Insert balancer (38) with red end on the right (viewed from inside the body.) Insert split pins (37) on either side of right hand bracket and open out to retain in position. These instructions are correct for 1776/1876 balancer as pictured. For other balancers please contact us.

LATCH PLATE

7



Align latch plate (20) as shown by appropriate diagram. Use latch plate as template to mark area to be cut out. When fitted, the upper face of the Latch plate **MUST** be flush with and parallel to the surface the door closes against. The latch plate can be welded or bolted in place. As an additional check, reference can be made to the gauge marks on the front of the lock (18).

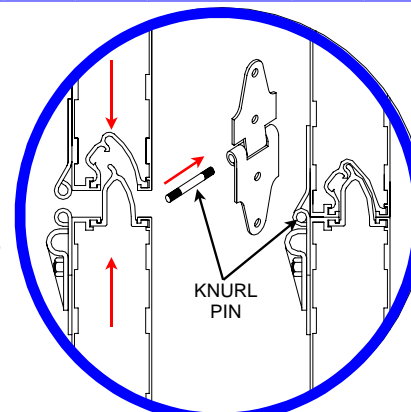
CURTAIN

4

INTERMEDIATE PANELS ARE 315mm, 340mm, 365mm, FOR AESTHETICS, DEEPER PANELS ARE OFTEN FITTED LOWER.

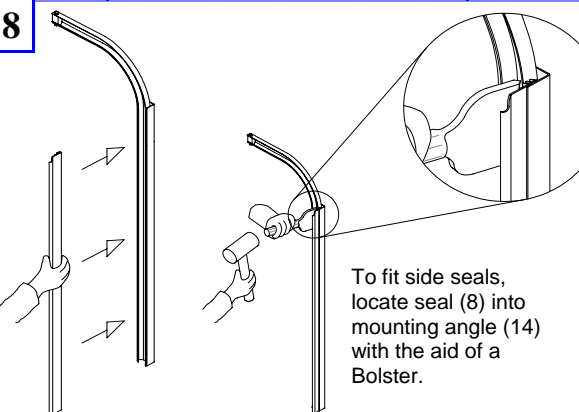
Fix mole grips to end of horizontal tracks to prevent door dropping. Place bottom Panel (3), with lock out wards, inside mounting angle (14). Locate steel rollers (25) & nylon bushes (59), with correct number of washers (32) (shown in brackets left) in track and attach to door with roller clamps (29), nuts (24). Join remaining panels together, Align male and female hinges and tap in knurl pins (43) (shown right), including the top panel (1), which should rest against adjoining panel while top closure arms are fitted.

Ensure all roller clamp nuts are tightened to torque of 11.3Nm (100lb in).



TO FINISH

8



Push rubber stop (35) into end of horizontal track (4,5) line up hole, insert bolt (36), and tighten nut (24).

To fit side seals, locate seal (8) into mounting angle (14) with the aid of a Bolster.

Check door operation, re-adjusting balancer if necessary.

Check cables wind onto outside of balancer drum proper.

Check lock locates correctly with latch plate.



**STAND CLEAR OF
OPENING WHEN DOOR IS
MOVING**

**Leave the copy of
maintenance/fitting
instructions provided in the
cab of the vehicle together
with the remainder of the
vehicle documentation or in
the case of a semi-trailer
together with any
documentation relating to the
trailer.**



**DO NOT USE PULL
STRAP TO LEAVE
VEHICLE**

**ALWAYS CLOSE AND LOCK THE DOOR BEFORE DRIVING VEHICLE
DO NOT MOVE VEHICLE WITH DOOR IN THE UNDER ROOF POSITION.**

IMPORTANT MAINTENANCE INFORMATION

The following should be read and included in the Maintenance Schedule

This door is constructed of high quality components intended to provide years of continued service. When in operation it is a large moving object, therefore, to ensure safe, reliable and continued operation, the following cautionary directions and periodic maintenance instructions must be observed.

1. While door is moving do not stand within opening or walk through doorway.
2. Operate door only when correctly adjusted and free from obstructions.
3. High-pressure cleaners or solvents can damage the door.
4. If door becomes difficult to operate or completely inoperative, it must be repaired immediately by an approved agent. Particular care should be given to the counter balance and cables. Repair and adjustment can be **hazardous** and should only be performed by an **approved agent**
5. **Daily:** - A general visual inspection of the shutter should be carried out with specific attention to the cable along the full length.
6. Replace any frayed or otherwise damaged cables.
7. Ensure regular checks and maintenance on items shown below (**Every 6-8 weeks**)
 - All nuts, bolts, screws and rivets to be checked for tightness.
 - Check all rollers operate smoothly, replace worn or damaged rollers.
 - Replace frayed or worn Pull Straps. **DO NOT** attach anything to the Pull Strap.
 - Where the lock mechanism is fitted or controlled by a **keyed cylinder** lubricate the cylinder **ONLY** with manufacturers recommended lubricant.
 - Other parts of the lock mechanism can be lubricated with light oil.
 - Tracks must be clear of grease and dirt.
 - Check roller shutter operation, lubricate roller shafts, bearings, hinges, tracks and spring with light oil (**not grease**) the use of aerosol sprays is not recommended as this may wash away the lubricant packed in the roller bearings.
 - Check door panels (inside and out) for gouges or paint chips, and repaint as needed.
 - If you repaint, check and if necessary re-adjust tension on lifting mechanism to restore ease of operation.

Use only genuine JR Mobile spare parts; the use of any other manufactured parts or not following the above will invalidate the warranty. In the unlikely event of an operational or warranty concern please contact

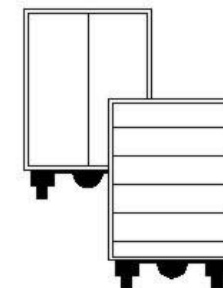
**Customer Services 029 20546135
Mobile 07974 390511**

JR Mobile has a network of Agents for you're nearest Agent please contact
J R Industries Ltd
Tel +44 (0) 2920 549966
Or visit www.jrindustries.co.uk

JR

Mobile

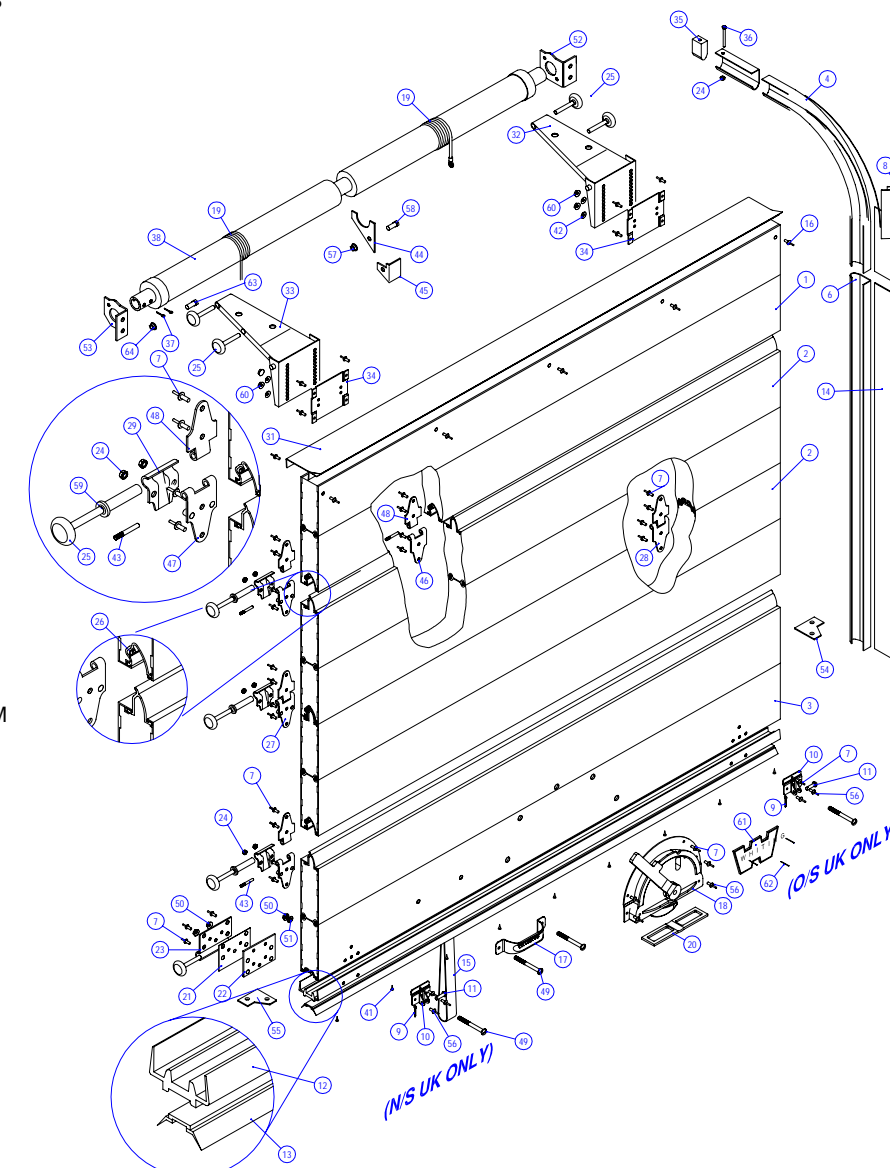
Whiting



**TEMPSAVER 50
SAFEGUARD
FITTING
INSTRUCTIONS**

PARTS LIST

1. TOP, INTERMEDIATE & BOTTOM PANELS
2. VARY ACCORDING TO DOOR NUMBER
3. 318mm, 343mm, or 363mm
4. HORIZONTAL TRACK 254(10") RADIUS-O/S
5. HORIZONTAL TRACK 254(10") RADIUS-N/S
6. VERTICAL TRACK
7. RIVET 6.4mm X 14.5mm
8. SIDE SEAL
9. COTTER PIN 3 X 19
10. CABLE ANCHOR
11. CLEVIS PIN
12. BOTTOM PANEL CAPPING
13. BOTTOM SEAL DUAL DUROMETER
14. MOUNTING ANGLE
15. 19" PULL STRAP & E COATED BUCKLE
16. RIVET D850
17. GRAB HANDLE
18. LOCK ASSEMBLY
19. CABLE-3175mm (125")
20. LATCH PLATE
21. WEAR PLATE BOTTOM ROLLER
22. BOTTOM ROLLER BRACKET
23. BOTTOM ROLLER CLAMP
24. M6 NYLOC NUT
25. TRACK ROLLER
26. TUBULAR INTERSEAL
27. END ROLLER HINGE
28. CENTRE HINGE
29. ROLLER CLAMP
30. SPACER WASHER (ROLLER SHAFT)
31. TOP CAPPING SEAL
32. TOP PANEL CLOSURE BRACKET O/S
33. TOP PANEL CLOSURE BRACKET N/S
34. MOUNTING BRACKET-TOP CLOSURE ARM
35. TRACK STP BUMPER
36. M6 BOLT
37. SPLIT PIN 5/16" x 1 3/4"
38. CLOSED BALANCER ASSEMBLY
39. HANDLE-INSIDE RELEASE
40. BOLT FOR ITEM (41)-5/8" X 5 1/2"
41. SELF TAPPING SCREW No. 8 X 3/4"
42. M6 SHAKEPROOF WASHER
43. KNURL PIN FOR JOINING PANELS
44. 'YOKE' CENTRE BRACKET
45. CENTRE BRACKET
46. FEMALE HINGE (NO STUDS)
47. FEMALE HINGE (WITH STUDS)
48. MALE HALFHINGE
49. M8 X 75mm SLOTTED PAN HEAD SCREW
50. M8 NYLOC NUT (S/STEEL)
51. M6 FLAT WASHER (S/STEEL)
52. MOUNTING BRACKET O/S
53. MOUNTING BRACKET N/S
54. 'B' PLAN PLATE N/S
55. 'B' PLAN PLATE N/S
56. HEMLOCK RIVET 1/4 X 21mm
57. WHIZZ HUT 3/8"
58. BOLT 3/8" X 3/4"
59. NYLON SLEEVE (56mm)
60. M6 PLAIN NUT
61. NAME PLATE
62. 1/8" x 10mm RIVET
63. M8 x 30mm HEX BOLT BZP
64. M8 WHIZZ NUT



**J.R INDUSTRIES LTD.
CAXTON PLACE, PENTWYN
CARDIFF
CF23 8XN
TEL: (029) 2054 9966
FAX: (029) 2054 9046
WWW.jrindustries.co.uk**