

Shutter Details

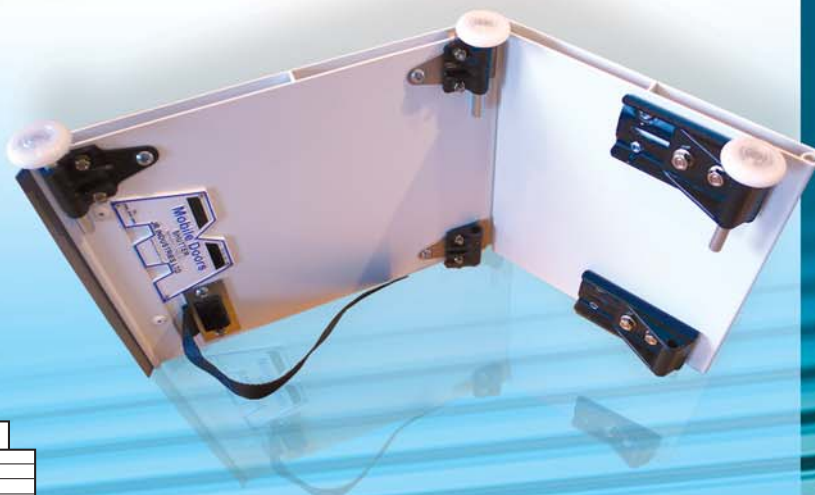
- Integrally extruded aluminium continuous hinge.
- 1.8mm thick centrally reinforced aluminium panels.
- Zytel roller holders.
- 50mm sealed rollers with nylon tyre.
- Zytel top closure slide.
- Heavy duty aluminium bottom seal carrier.
- Powder coat option.
- Choice of locks.
- Electric operation option available.
- Single spring balancer.
- Twin cable operation.
- Stainless steel anti lozenge brackets.

The C4 Lite with all aluminum fully recyclable panels provides high strength and low maintenance for dry freight vehicle applications.



Shutter Features

- Approximately 15% lighter than an aluminum continuous hinge wooden door.
- Smooth / quiet operation.
- Fully recyclable panels.
- Developed to resist internal impact to a higher degree than standard wood.
- Low maintenance.
- Easily assembled / disassembled using clip together continuous hinge panels.
- Easy change rollers.

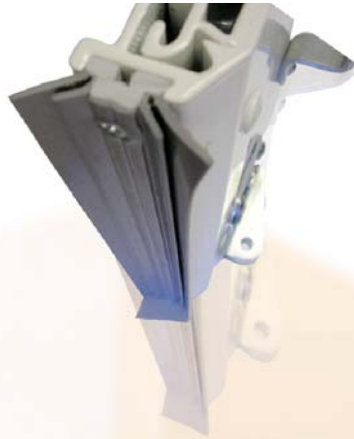


C4 Lite

Stainless steel anti lozenge brackets with easy change Zytel roller holders



Heavy duty aluminum bottom seal carrier with four tang seal giving improved performance



Continuous hinge technology provides easier and quicker installation



Zytel top closure bracket for quieter operation and rapid adjustment



Large 50mm diameter sealed nylon rollers for smooth quiet operation



Maximum security lock as standard



Innovation on the Move

J R Industries Ltd

Caxton Place, Pentwyn, Cardiff, CF23 8XN, United Kingdom.
Tel: +44 (0) 29 2054 9966
Fax: +44 (0) 29 2054 9046



Q05815

All products produced by J R Industries Ltd carry ISO 9001/2000 quality accreditation gained in December 1988.

www.jrindustries.co.uk